



**REGIONAL SPECIALISED METEOROLOGICAL CENTRE-TROPICAL CYCLONES, NEW DELHI
TROPICAL WEATHER OUTLOOK**

DEMS-RSMC TROPICAL CYCLONES NEW DELHI DATED 05.08.2024

TROPICAL WEATHER OUTLOOK FOR NORTH INDIAN OCEAN (THE BAY OF BENGAL AND THE ARABIAN SEA) VALID FOR NEXT 168 HOURS ISSUED AT 0600 UTC OF 05.08.2024 BASED ON 0300 UTC OF 05.08.2024.

LAND REGION:

(A) DEPRESSION OVER NORTHEAST RAJASTHAN AND NEIGHBOURHOOD (INDIA)

YESTERDAY'S DEEP DEPRESSION OVER NORTHEAST MADHYA PRADESH AND ADJOINING SOUTH UTTAR PRADESH MOVED WEST-NORTHWESTWARDS, WEAKENED INTO A DEPRESSION AT 0000 UTC AND LAY CENTERED AT 0300 UTC OF TODAY, THE 5TH AUGUST OVER NORTHEAST RAJASTHAN AND NEIGHBOURHOOD NEAR LATITUDE 26.5°N AND LONGITUDE 75.6°E, ABOUT 40 KM SOUTH-SOUTHWEST OF JAIPUR (RAJASTHAN), 100 KM EAST OF AJMER (RAJASTHAN), 130 KM SOUTH-SOUTHEAST OF SIKAR (RAJASTHAN) AND 280 KM SOUTHEAST OF BIKANER (RAJASTHAN).

IT IS LIKELY TO CONTINUE TO MOVE WEST-NORTHWESTWARDS ACROSS NORTH RAJASTHAN AND WEAKEN FURTHER INTO A WELL MARKED LOW PRESSURE AREA DURING NEXT 12 HOURS.

(B) LOW PRESSURE AREA OVER PAKISTAN BECAME LESS MARKED OVER SOUTH PAKISTAN AND ADJOINING NORTHEAST ARABIAN SEA AT 0000 UTC

YESTERDAY'S LOW PRESSURE AREA OVER **SOUTHWEST RAJASTHAN & ADJOINING SOUTH PAKISTAN** LAY OVER SOUTH PAKISTAN AND NEIGHBOURHOOD IN THE SAME EVENING (1200 UTC) OF 4TH AUGUST AND BECAME LESS MARKED OVER SOUTH PAKISTAN AND ADJOINING NORTHEAST ARABIAN SEA AT 0000 UTC OF TODAY, THE 5TH AUGUST 2024.

BAY OF BENGAL:

SCATTERED LOW AND MEDIUM CLOUDS WITH EMBEDDED INTENSE TO VERY INTENSE CONVECTION LAY OVER EAST BAY OF BENGAL, ANDAMAN SEA, GULF OF MARTABAN & ARAKAN COAST. SCATTERED LOW AND MEDIUM

CLOUDS WITH EMBEDDED MODERATE TO INTENSE CONVECTION LAY OVER WEST BAY OF BENGAL & TENASSERIM COAST.

***PROBABILITY OF CYCLOGENESIS (FORMATION OF DEPRESSION) DURING NEXT 168 HRS:**

24 HOURS	24-48 HOURS	48-72 HOURS	72-96 HOURS	96-120 HOURS	120-144 HOURS	144-168 HOURS
NIL	NIL	NIL	NIL	NIL	NIL	NIL

***NOTE: EVERY 24HR FORECAST IS VALID UPTO 0300 UTC (0830 IST) OF NEXT DAY**

ARABIAN SEA:

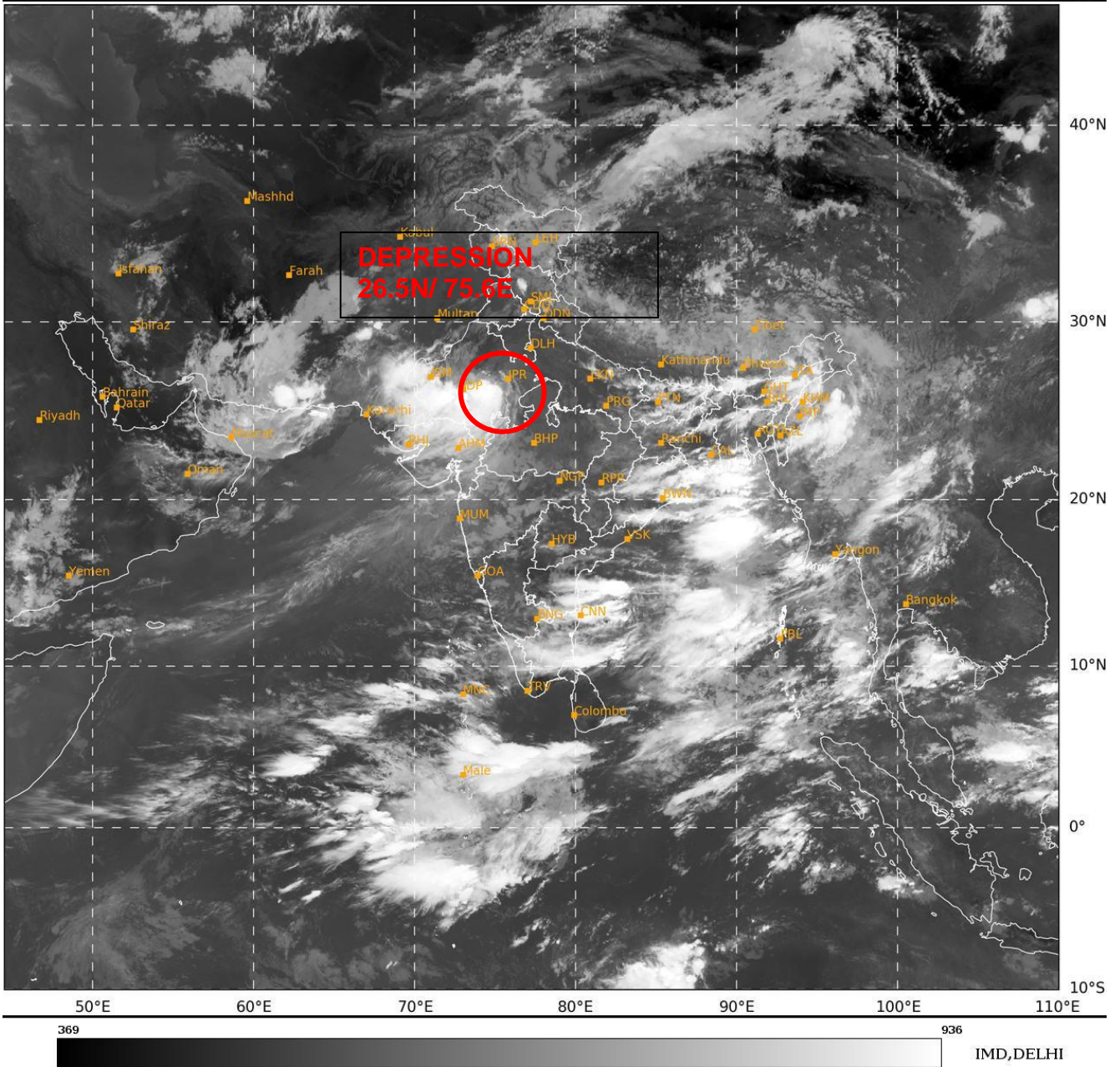
SCATTERED LOW AND MEDIUM CLOUDS WITH EMBEDDED INTENSE TO VERY INTENSE CONVECTION LAY OVER EASTCENTRAL ARABIAN SEA OFF MAHA COAST AND SOUTH ARABIAN SEA. SCATTERED LOW AND MEDIUM CLOUDS WITH EMBEDDED MODERATE TO INTENSE CONVECTION LAY OVER NORTHEAST ARABIAN SEA REST OF EASTCENTRAL ARABIAN SEA, LAKSHADWEEP ISLANDS AREA & MALDIVES AREA. SCATTERED LOW AND MEDIUM CLOUDS WITH EMBEDDED ISOLATED WEAK TO MODERATE CONVECTION LAY OVER NORTHWEST & WESTCENTRAL ARABIAN SEA, GULF OF KUTCH and GULF OF CAMBAY.

***PROBABILITY OF CYCLOGENESIS (FORMATION OF DEPRESSION) DURING NEXT 168 HRS:**

24 HOURS	24-48 HOURS	48-72 HOURS	72-96 HOURS	96-120 HOURS	120-144 HOURS	144-168 HOURS
NIL	NIL	NIL	NIL	NIL	NIL	NIL

***NOTE: EVERY 24HR FORECAST IS VALID UPTO 0300 UTC (0830 IST) OF NEXT DAY**

REMARKS: NIL



Cloud distribution: (a) Isolated: <25%, Scattered:25-50%, Broken: 51-75%, Solid:>75%, Convection Intensity: (a) Weak: Cloud Top Temperature (CTT) >-25°C, (b) Moderate: CTT: - 25°C to -40°C, (c) Intense: CTT: - 41°C to -70°C and (d) Very Intense: : Less than -70°C
PROBABILITY OF CYCLOGENESIS (FORMATION OF DEPRESSION):NIL: 0%, LOW: 1-33%, , MODERATE: 34-66% AND HIGH: 67-100%
This is a guidance Bulletin for WMO/ESCAP Panel Member countries. Visit respective National websites for Country specific Bulletins